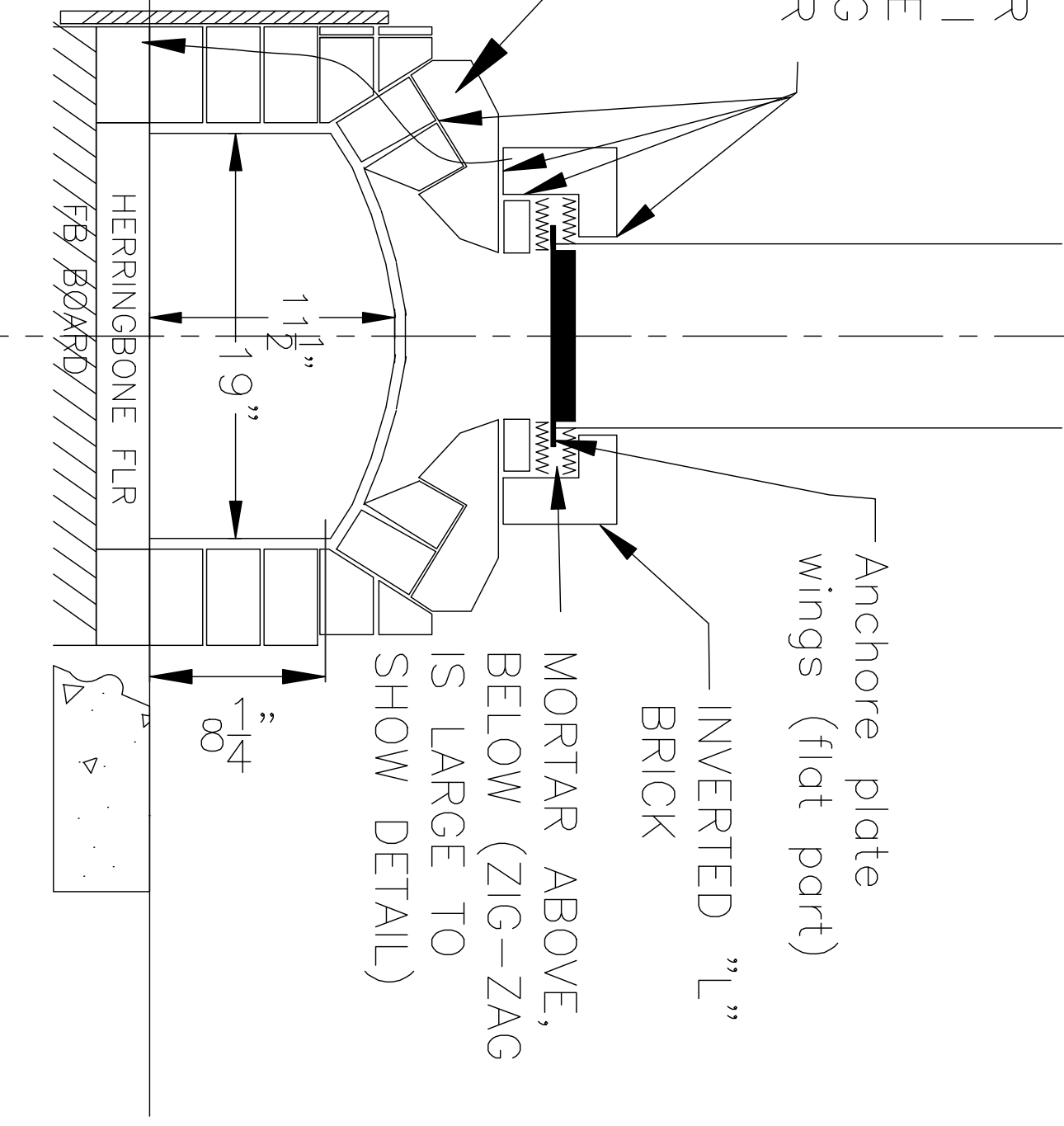
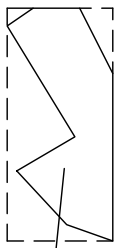


# HOW I ATTACHED MY ANCHORE PLATE BY MORTAR ONLY

THERE IS MORTAR  
HERE TOO BUT I  
SHOWED THE  
ZIG-ZAG  
STUFF LARGER

These are my  
"quaker-hat" bricks  
worked so well to  
bridge my wide  
opening and transfer  
the load out to the  
arch sides. Worked  
really well!



LOAD DIRECTION

HERRINGBONE FLR

Anchore plate  
wings (flat part)

INVERTED "L"  
BRICK

MORTAR ABOVE,  
BELOW (ZIG-ZAG  
IS LARGE TO  
SHOW DETAIL)

1 1/4"

1 1/2"

1 9"

FB BOARD